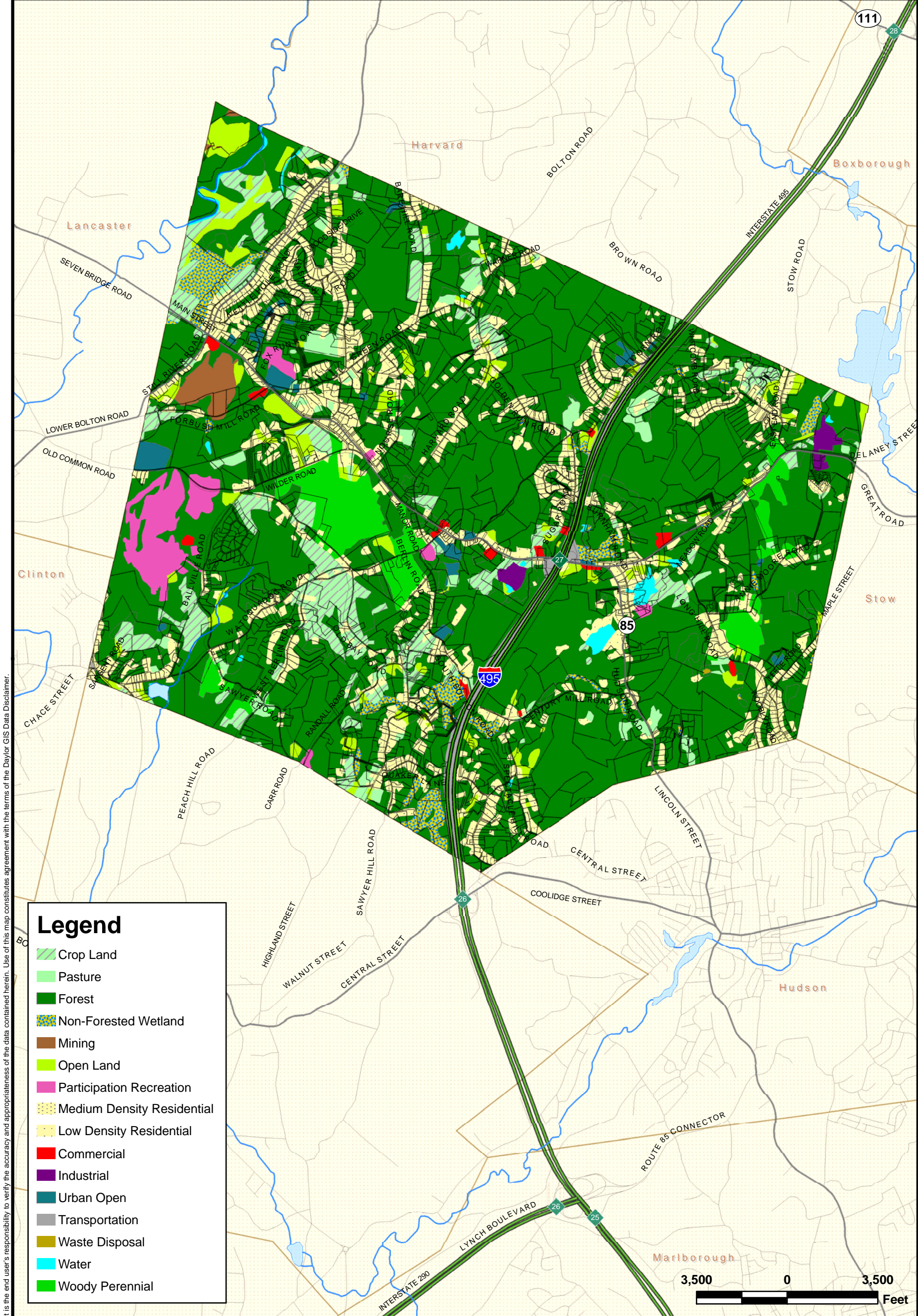
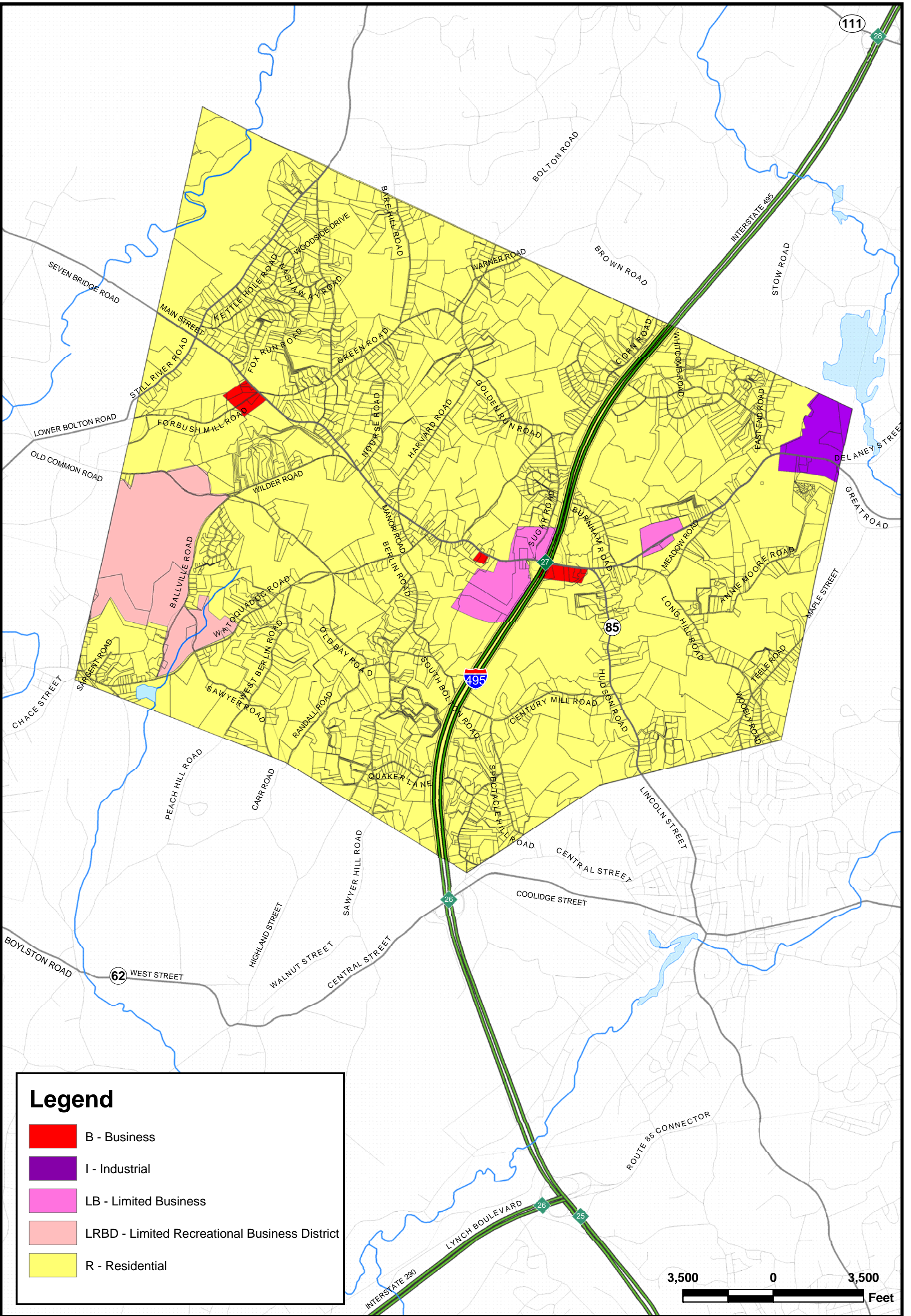


It is the end user's responsibility to verify the accuracy and appropriateness of the data contained herein. Use of this map constitutes agreement with the terms of the Daylor GIS Data Disclaimer.



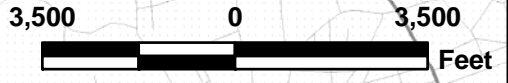
It is the end user's responsibility to verify the accuracy and appropriateness of the data contained herein. Use of this map constitutes agreement with the terms of the Daylor GIS Data Disclaimer.

It is the end user's responsibility to verify the accuracy and appropriateness of the data contained herein. Use of this map constitutes agreement with the terms of the Daylor GIS Data Disclaimer.

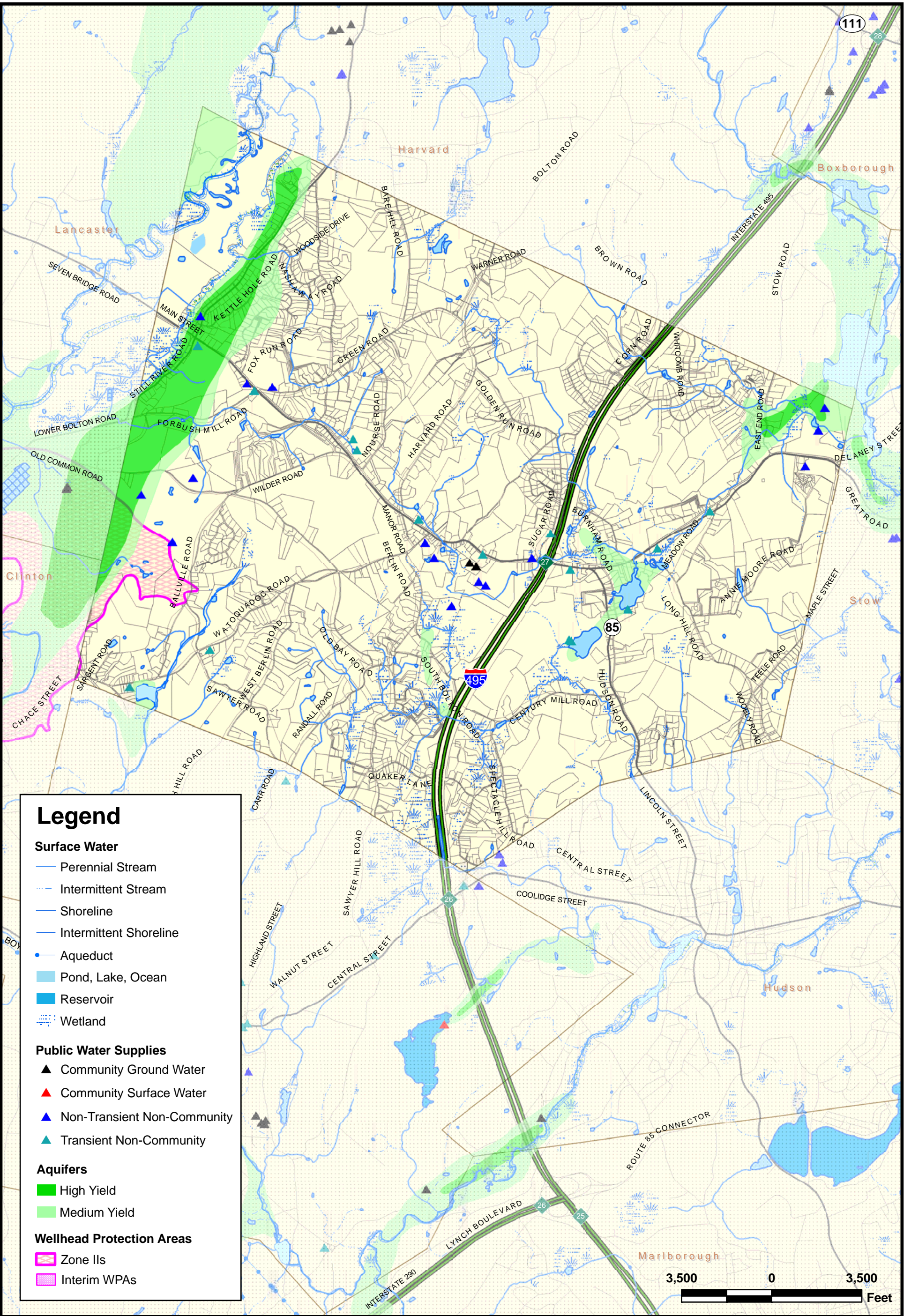


**Legend**

- B - Business
- I - Industrial
- LB - Limited Business
- LRBD - Limited Recreational Business District
- R - Residential



It is the end user's responsibility to verify the accuracy and appropriateness of the data contained herein. Use of this map constitutes agreement with the terms of the Daylor GIS Data Disclaimer.



**Legend**

**Surface Water**

- Perennial Stream
- Intermittent Stream
- Shoreline
- Intermittent Shoreline
- Aqueduct
- Pond, Lake, Ocean
- Reservoir
- Wetland

**Public Water Supplies**

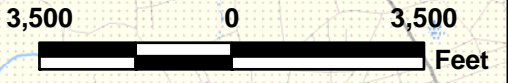
- Community Ground Water
- Community Surface Water
- Non-Transient Non-Community
- Transient Non-Community

**Aquifers**

- High Yield
- Medium Yield

**Wellhead Protection Areas**

- Zone IIs
- Interim WPAs



**Daylor Consulting Group Inc.**

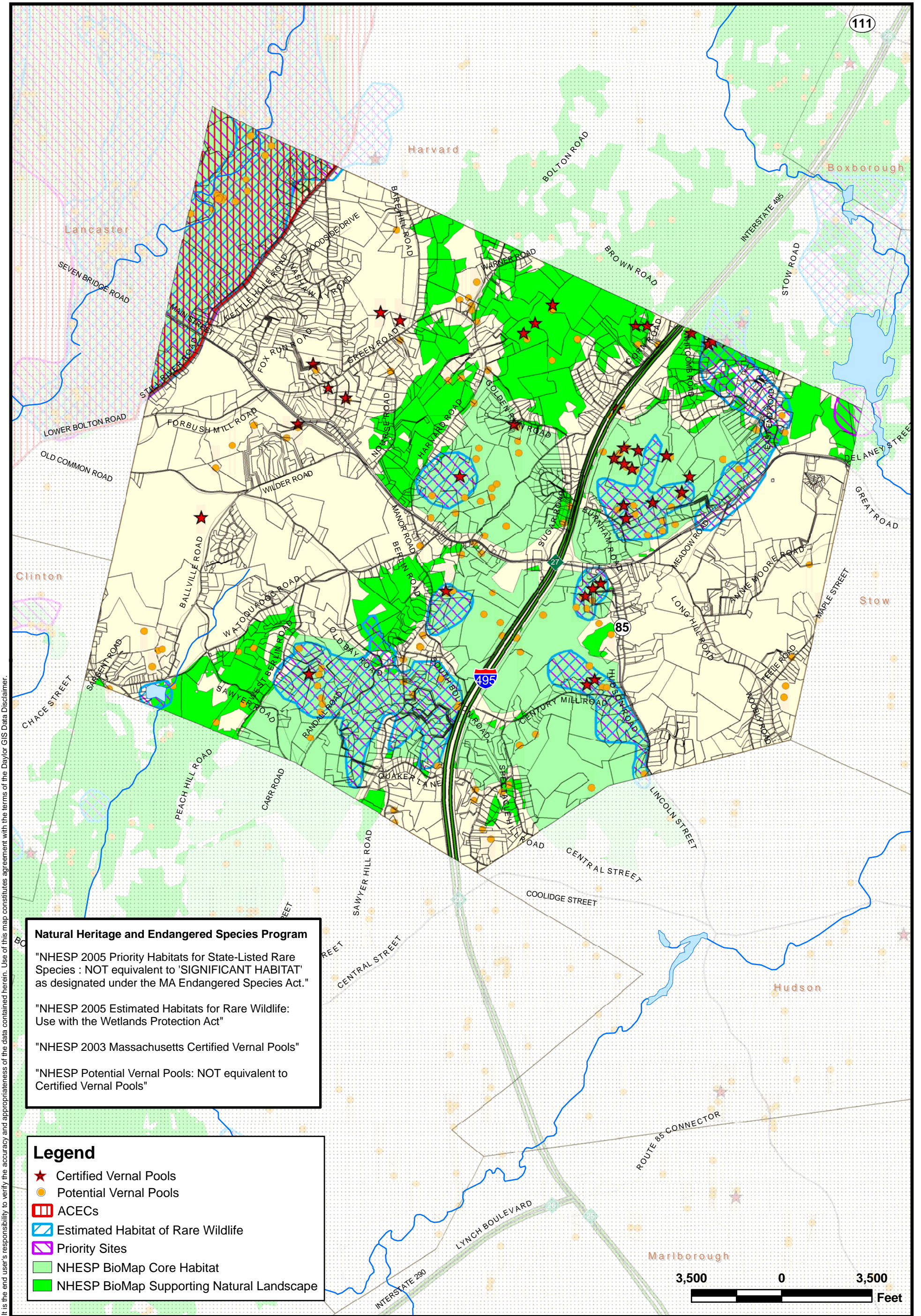
Ten Forbes Road Braintree, MA 02184 781 / 849-7070

**Water Resources  
Town of Bolton**

Scale 1" = 3,500 ft.

Source: MassGIS

**Figure  
4-4**



**Natural Heritage and Endangered Species Program**

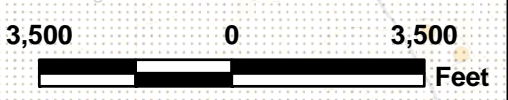
"NHESP 2005 Priority Habitats for State-Listed Rare Species : NOT equivalent to 'SIGNIFICANT HABITAT' as designated under the MA Endangered Species Act."

"NHESP 2005 Estimated Habitats for Rare Wildlife: Use with the Wetlands Protection Act"

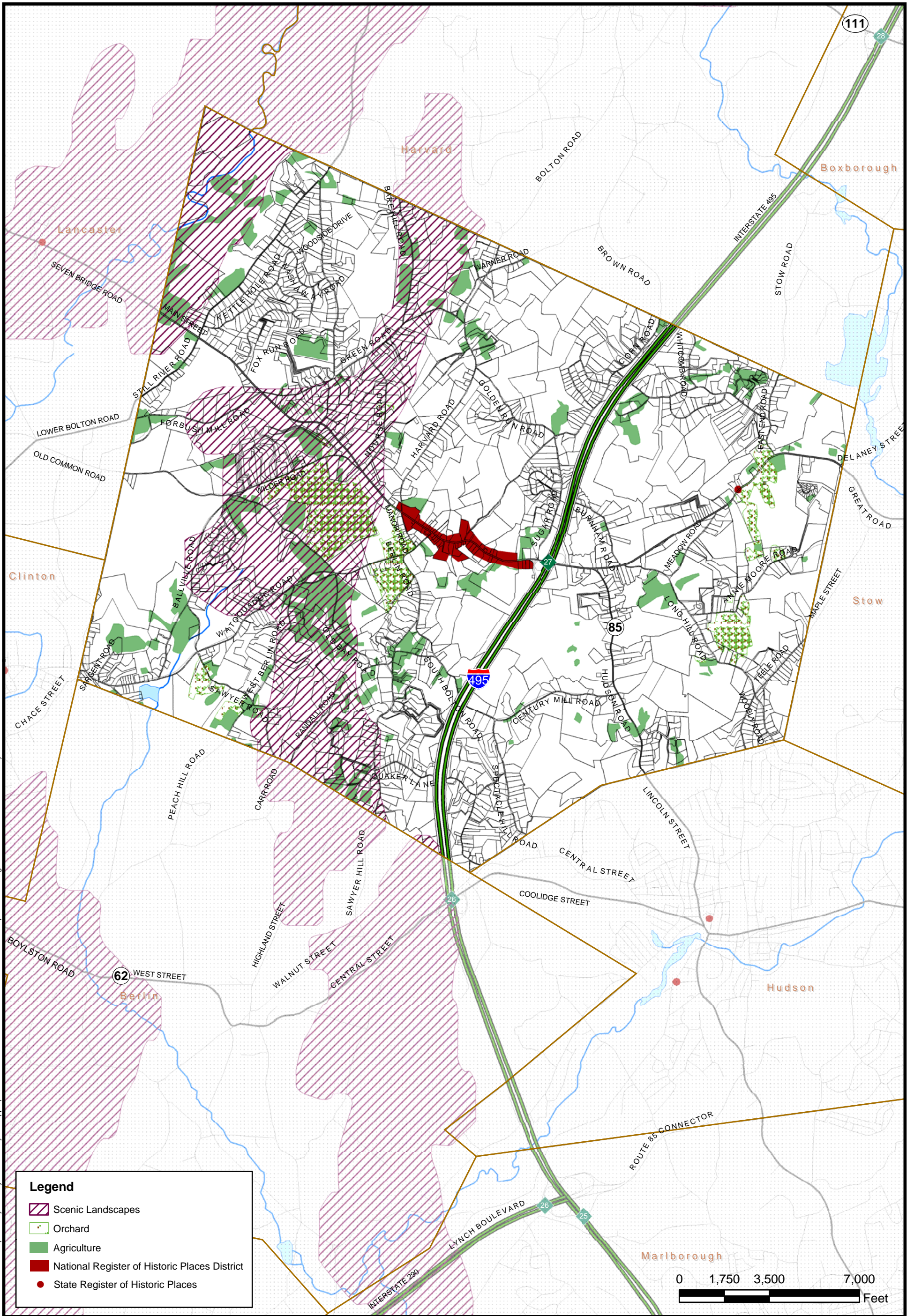
"NHESP 2003 Massachusetts Certified Vernal Pools"

"NHESP Potential Vernal Pools: NOT equivalent to Certified Vernal Pools"

- Legend**
- ★ Certified Vernal Pools
  - Potential Vernal Pools
  - ▨ ACECs
  - ▨ Estimated Habitat of Rare Wildlife
  - ▨ Priority Sites
  - NHESP BioMap Core Habitat
  - NHESP BioMap Supporting Natural Landscape

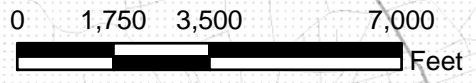


It is the end user's responsibility to verify the accuracy and appropriateness of the data contained herein. Use of this map constitutes agreement with the terms of the Daylor GIS Data Disclaimer.



**Legend**

- Scenic Landscapes
- Orchard
- Agriculture
- National Register of Historic Places District
- State Register of Historic Places



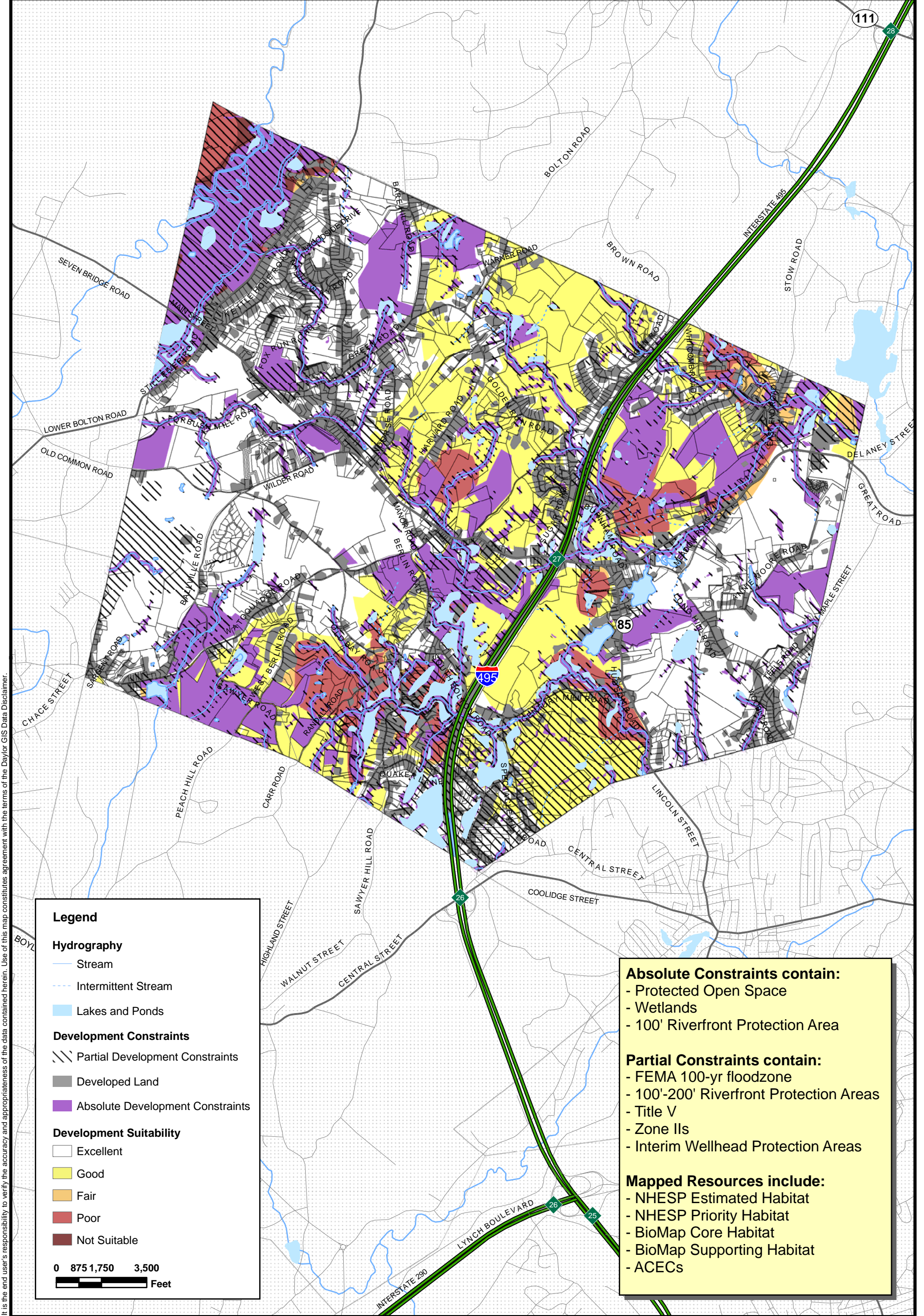
**Daylor Consulting Group Inc.**  
 Ten Forbes Road Braintree, MA 02184 781 / 849-7070

# Special Landscape Features

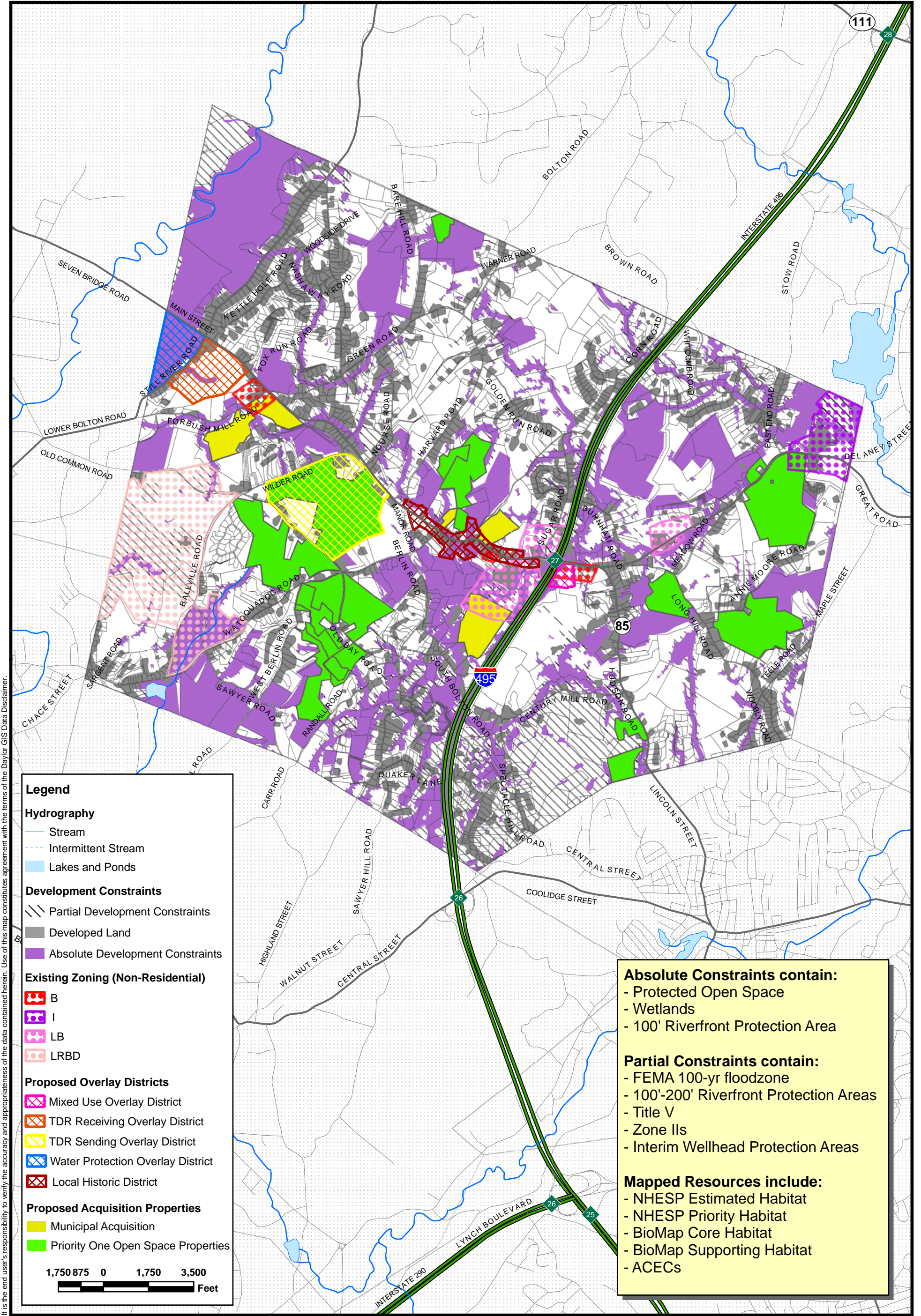
## Town of Bolton

Scale 1" = 3,500 ft.  
  
 Source: MassGIS

**Figure 4-6**



It is the end user's responsibility to verify the accuracy and appropriateness of the data contained herein. Use of this map constitutes agreement with the terms of the Daylor GIS Data Disclaimer.



**Legend**

**Hydrography**

- Stream
- Intermittent Stream
- Lakes and Ponds

**Development Constraints**

- Partial Development Constraints
- Developed Land
- Absolute Development Constraints

**Existing Zoning (Non-Residential)**

- B
- I
- LB
- LRBD

**Proposed Overlay Districts**

- Mixed Use Overlay District
- TDR Receiving Overlay District
- TDR Sending Overlay District
- Water Protection Overlay District
- Local Historic District

**Proposed Acquisition Properties**

- Municipal Acquisition
- Priority One Open Space Properties

1,750 875 0 1,750 3,500 Feet

**Absolute Constraints contain:**

- Protected Open Space
- Wetlands
- 100' Riverfront Protection Area

**Partial Constraints contain:**

- FEMA 100-yr floodzone
- 100'-200' Riverfront Protection Areas
- Title V
- Zone IIs
- Interim Wellhead Protection Areas

**Mapped Resources include:**

- NHESP Estimated Habitat
- NHESP Priority Habitat
- BioMap Core Habitat
- BioMap Supporting Habitat
- ACECs