

# SPECIAL EVENT APPLICATION



Invitational Series - Boston  
September 2 – 4, 2022

The International  
Bolton, MA

PAR **5** GROUP

# LIV GOLF MISSION & OVERVIEW



## Mission

To modernize and supercharge the game of professional golf through expanded opportunities for both players and fans alike.

## Invitational Series Overview

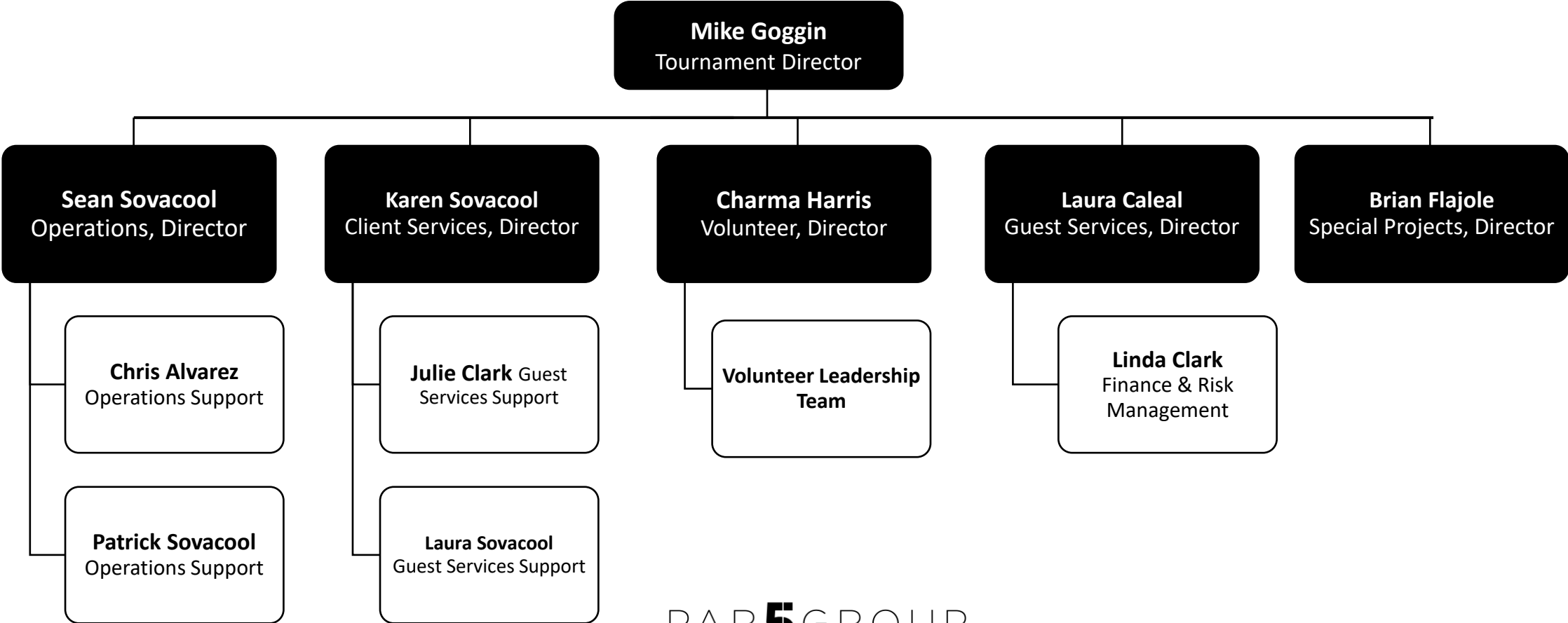
Our new eight event series will take place from June – October 2022 across North America, Europe, Middle East, and Asia. It is an opportunity to reinvigorate golf through a structure that adds value to the entire sport while helping to bring new audiences to the game through a cutting-edge entertainment product. **The LIV Golf Invitational Series - Bolton is the 4th event in the 8 event invitational series.**

## How it Works

12 teams. 48 players. 54 holes. No cut. Shotgun starts.

# TOURNAMENT STAFF

## PAR 5 GROUP





# LIV STAFF & PARTNERS



**Greg Norman – CEO**

*Businessman & Former World #1 Golfer*

**Atul Khosla – Chief Operations Officer**

*Tampa Bay Buccaneers – NFL*

**Ron Cross – Chief Events Officer**

*Sr. Executive PGA Tour & Augusta National Golf Club*

**Emily Hamel – SVP, Experience Design**

*New York Yankees – MLB*

**Jim Costigan – VP, Security**

*FBI, U.S. Navy, The Masters Head of Security*

**David Benne – VP, Event Delivery**

*Operations, The Masters*

**Brett Adams – VP, Event Delivery**

*PGA Tour Championship, NASCAR*

**Mike Goggin - Tournament Director**

*2017 US Senior Open, PGA Tour, Presidents Cup, Peak Event Services*

**Sean Sovacool – Partner**

*PGA Tour, USGA, College Gameday*

**Linda Clark – Chief Operations Officer**

*ATP World Tour, PGA Tour*

**Charma Harris - Volunteer Director**

*PGA Tour, CNA*

**Laura Caleal – VP, Event Delivery**

*USGA, Walker Cup, IMG*

**Steve Brennan**

*General Manager*

## Partners

**OFF STREET PARKING & TRAFFIC CONSULTING:**  
**Country Club Services Parking, Transportation, & Shuttle Management**

*US Open, Masters*

**WASTEWATER:**

**United Site Services – Restrooms & Water**

*World HQ in Westborough, The nation's leader in portable toilet restroom services*

**REFUSE DISPOSAL:**

**Titan Events, Blue Strike Environmental – Resource Management**

*Strategic planning and development of sustainable, recyclable, and waste management services*

**TRAFFIC PLANNING & SECURITY:**

**Bolton PD & Regional Law Enforcement**

**Andy Frain Services**

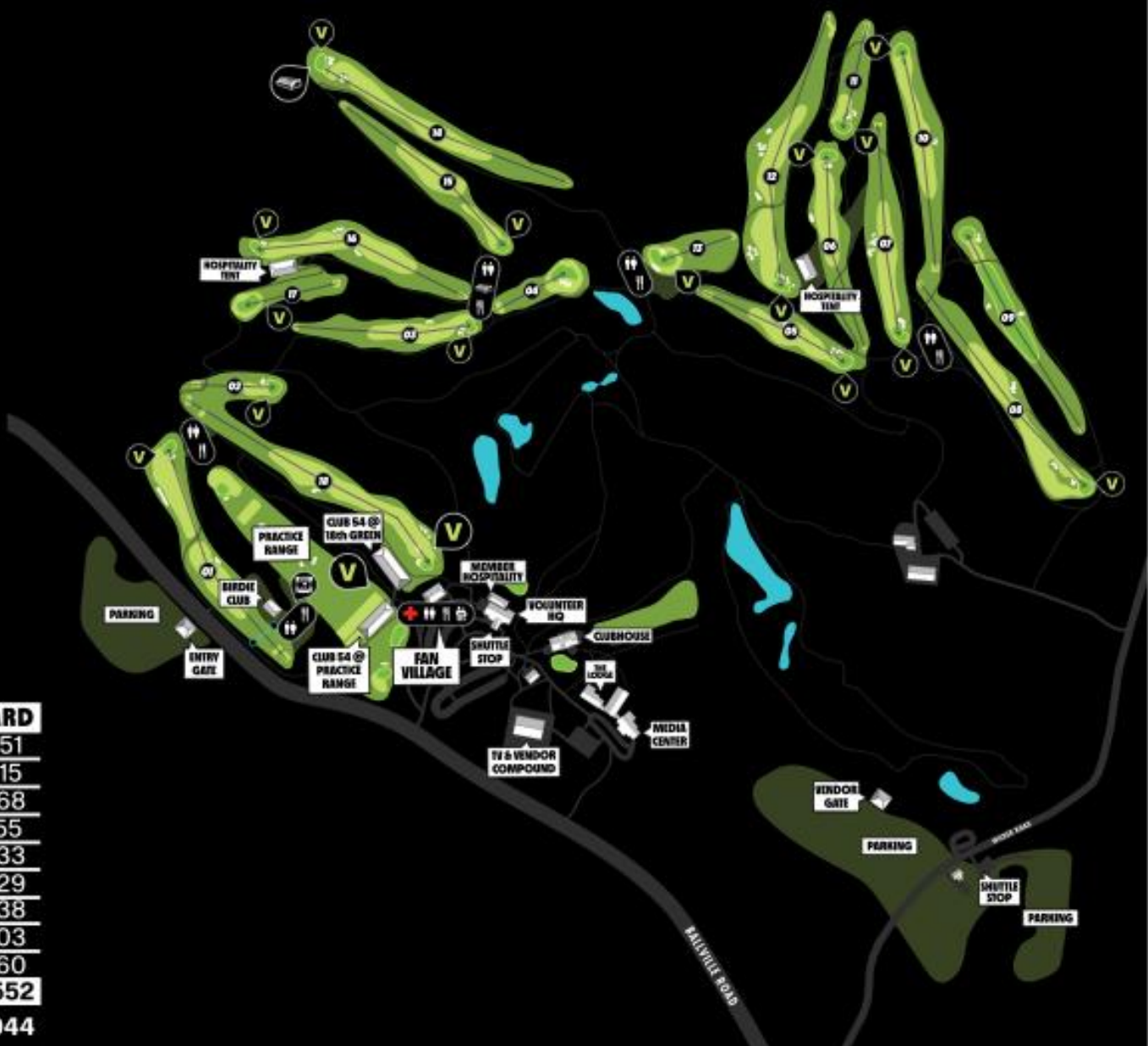
*A national leader providing integrated solutions to security and events for over 90 years*

**FIRE PROTECTION:**

**Bolton & Regional Fire & Emergency Management Services**



-  **VIEWING DECK**
-  **HOSPITALITY**
-  **RESTROOM**
-  **VIDEO BOARD**
-  **CONCESSION**
-  **MUSIC**
-  **FIRST AID**
-  **FAMILY SERVICES**
-  **CROSSWALK**



## SCORECARD

HOLE	PAR	YARD	HOLE	PAR	YARD
01	4	524	10	4	451
02	3	178	11	3	215
03	4	352	12	5	568
04	3	172	13	3	155
05	4	341	14	4	533
06	4	400	15	4	429
07	4	431	16	4	438
08	5	536	17	3	203
09	4	458	18	5	560
<b>OUT</b>	<b>35</b>	<b>3392</b>	<b>IN</b>	<b>35</b>	<b>3552</b>
<b>PAR</b>	<b>70</b>		<b>TOTAL</b>		<b>6944</b>

**Invitational BOSTON 2022**  
THE INTERNATIONAL SEPTEMBER 2 - 4



# SCHEDULE OF EVENTS



## **Wednesday, August 24**

The International Closes to Membership Play

## **Wednesday, August 31**

Practice Round  
Closed to the  
Draft Party

## **Thursday, September 1**

Official Pro-Am - Tee times Starting @ 10 AM  
Practice Rounds  
Closed to the public

## **Friday, September 2**

Public Parking Lots Open @ 9:30 AM  
Gates & Hospitality Open @ 10:00 AM  
First Round – Shotgun start approximately @ 1:00 PM  
Live Music – Fan Village After Play 5:30 – 9:00 PM

## **Friday, September 2**

Public Parking Lots Open @ 10:00 AM  
Gates & Hospitality Open @ 10:00 AM  
First Round – Shotgun start approximately @ 1:00 PM  
Fan Village & Live Music – After Play 6:00 – 10:00 PM

## **Saturday, September 3**

Public Parking Lots Open @ 9:30 AM  
Gates & Hospitality Open @ 10:00 AM  
Second Round – Shotgun start approximately 1:00 PM  
Fan Village & Live Music – After Play 6:00 – 10:00 PM

## **Sunday, September 4**

Public Parking Lots Open @ 10:00AM  
Gates & Hospitality Open at 10:00 AM  
Final Round – Shotgun start approximately 1:00PM  
Fan Village – After Play 6:00 – 10:00 PM  
Closing Ceremonies @ 6:30 PM  
Closing Concert – ACT TBD – Approximately 7:30 – 10:00 PM

## **Monday, September 4**

In the event of inclement weather, Tournament competition could play into Monday. Open to the public.  
The International opens back up to membership Tuesday, September 5.

# ECONOMIC BENEFIT & CHARITY



**Regional Spending - \$30M**

**Charitable Contributions \$1M** -To support education, environmental sustainability, golf development and well being of communities

**\$200/day/person** donated to groups or organizations and charities for on-site support at the event for parking etc.

- Any local charities who wish to learn more about LIV Golf's charitable program can send an email to [csr@livgolf.com](mailto:csr@livgolf.com)

# PARKING – LANCASTER FAIRGROUNDS

*PUBLIC PARKING, PICKUP / DROP OFF (2500 SPACES)*





# PARKING – FARM LOT

*BUS LOADING & UNLOADING / MAIN ENTRANCE / ADDITIONAL PARKING*



# PARKING – TWIN SPRINGS





# SHUTTLE HOURS OF OPERATION



## TWIN SPRINGS GOLF COURSE, BOLTON

Shuttles will transport operations partners, tournament staff, club staff, volunteers and members from Twin Springs to the clubhouse.

## BOLTON FAIR GROUNDS, LANCASTER

Shuttles will transport public from the fair to the Main Entrance at the Farm entrance on Ballville.

### Shuttle Hours of Operations

#### Advance Week

TWIN SPRINGS: Mon – Sun 6am – 8 pm

BOLTON FAIR: TBD as needed

#### Tournament Week

TWIN SPRINGS: Mon – Wed 6am – 8 pm

Thurs – Sun 5am – 11pm

BOLTON FAIR: Mon – Thur 8am – 10 pm

Fri – Sun 10am – 10:30 pm

# RESTROOMS, WATER MANAGEMENT & WASTEWATER DISPOSAL



## SERVICE SCHEDULE:

**AUGUST 21 - SEPTEMBER 1:** 6:00AM – 12:00 AM Daily

**SEPTEMBER 2-4:** 5:00AM – 9:00 AM or 8:00 PM – 11:00 PM Daily

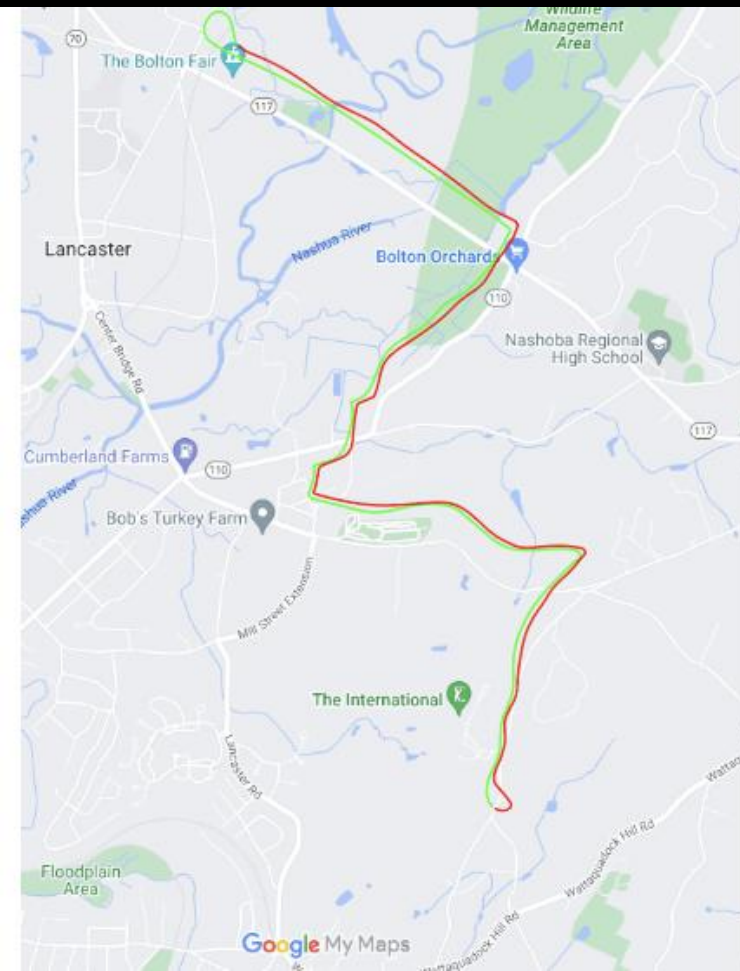
## USS Way: Sanitation Service

USS will service each restroom daily. All USS Service Techs are expected to provide a quality 10 Point Service on each unit serviced.

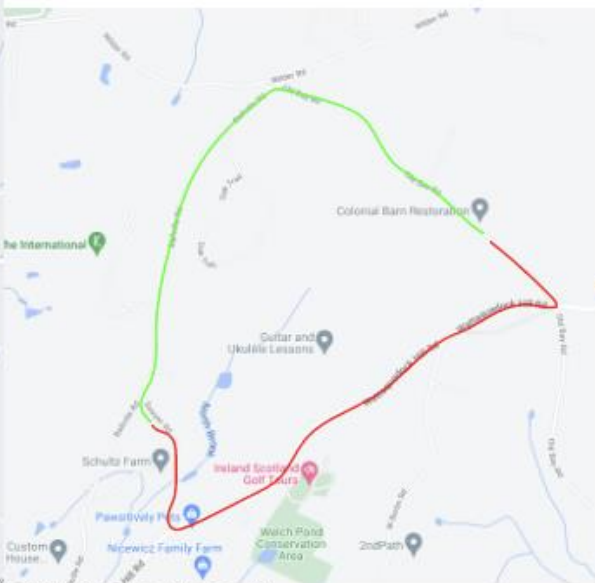
- Check Location and Scan Barcode
- Inspect Unit
- Pump Tank
- Clean Interior
- Refill the Restroom & Deodorize
- Dry Interior
- Refill Supplies
- Replenish Paper
- Verify Service
- Disinfect Restroom and End Work

All of the waste that is generated is disposed of in a tank onsite @ United Site Services in Foxborough, MA  
J & M transfer then pumps those tanks and transfers water to Cranston Waste Water Treatment plant.

# TRAFFIC CONTROL MEASURES



TO BE FINALIZED WITH BOLTON / LANCASTER PD  
RIDE TIME: 7-10 MINUTES EACH WAY  
DIRECT ACCESS FROM:  
495 / EXIT 70 TO 117  
190 / EXIT 17 TO 117



SAWYER ROAD LOT(S):  
POSSIBLE SHUTTLE ROUTE  
TO BE FINALIZED WITH BOLTON PD  
RIDE TIME: 3-5 MINUTES EACH WAY  
DIRECT ACCESS FROM:  
495 / EXIT 70 TO 117, LEFT @ WATTAQUADOCK

25 local and municipal details

25-40 state details

Variable Message Boards

Signage

# REFUSE DISPOSAL

Recycling,  
Sorting,  
Upcycling

ECO VILLAGE

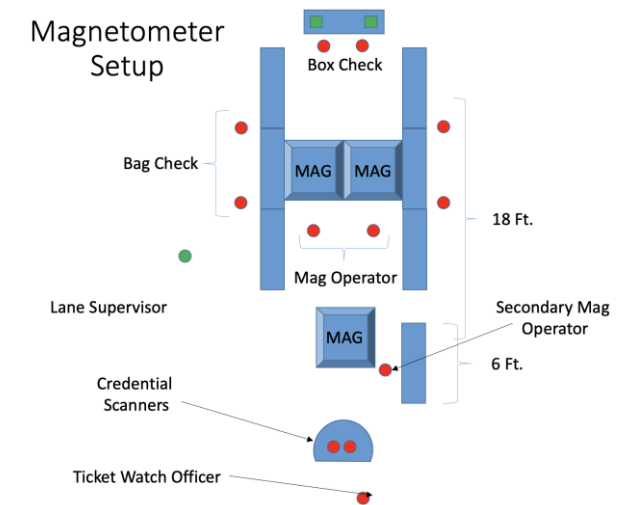


# CROWD CONTROL AND SECURITY



*“America’s leading provider of integrated solutions to security and events for over 90 years.”*

- 100+ POSTS / 135 STAFF 10AM – 10PM
- 12-15 POSTS / 20 STAFF 8PM – 10AM





# SECURITY BREAKDOWN



**FEDERAL**  
F.B.I., DHS, SECRET SERVICE

THREAT ASSESSMENT (DOMESTIC / INTERNATIONAL)  
MAJOR EMERGENCY SUPPORT  
FEDERAL-LEVEL SPECIAL GUESTS (EG: EX-PRESIDENTS, NATIONAL POLITICAL FIGURES)

**STATE**  
MA STATE POLICE

STATE ROAD & HIGHWAY MANAGEMENT  
MAJOR EMERGENCY SUPPORT  
HIGH LEVEL SPECIAL GUESTS (EG: GOVERNOR BAKER)

**MUNICIPAL**  
BOLTON PD, NEIGHBORING PD'S, CEMLEC

MAJOR & MINOR EMERGENCY SUPPORT  
TOWN ROAD MANAGEMENT (CLOSURES, ROAD CLOSURES VEHICLE MANAGEMENT)  
ADDITIONAL PROFESSIONAL PLAYER SECURITY (AS NEEDED UPON REQUEST FROM LIV GOLF)  
HIGH-PRIORITY ACCESS CONTROL (LOCKER ROOMS, INSIDE THE ROPES, OPENING / CLOSING CEREMONIES)  
HIGH LEVEL SPECIAL GUESTS (SELECTMEN, LOCAL OFFICIALS, POLITICIANS)  
EVENT POLICING OVERSIGHT (WEAPONS, TRESPASSING, ETC.)  
ARRESTS ON PROPERTY

**PRIVATE SECURITY**  
ANDY FRAIN SERVICES

MAJOR & MINOR EMERGENCY SUPPORT  
ACCESS CONTROL (EVENT PROPERTY, PRIVATE & PUBLIC STRUCTURES, ENTRANCE, SATELLITE PARKING)  
PROHIBITED ITEMS OVERSIGHT  
SPECTATOR OVERSIGHT (DISORDERLY CONDUCT, UNRULY PATRONS, ETC.)  
PLAYER SECURITY SUPPORT (PLAYER FAMILY DINING, INSIDE THE ROPES)  
SHIPMENT RECEIPTS (USPS, FEDEX, UPS, ETC.)

**VOLUNTEER ACCESS CONTROL**  
LIV Golf Boston Volunteers

LOW-LEVEL ACCESS CONTROL (CREDENTIALLED ACCESS POINTS INSIDE SECURE AREAS)  
ADDITIONAL SPECTATOR CONTROL (AS REQUESTED)



# SAFETY



## **First Aid Stations**

First Aid Stations will be located near the Clubhouse and house and #16 Green. We strongly advise you to bring sunscreen and to drink plenty of liquids.

## **Weather/ Evacuations**

In conjunction with the LIV Golf, the Invitational has an inclement weather policy in place. There are three levels of weather conditions which will be indicated on scoreboards throughout the course:

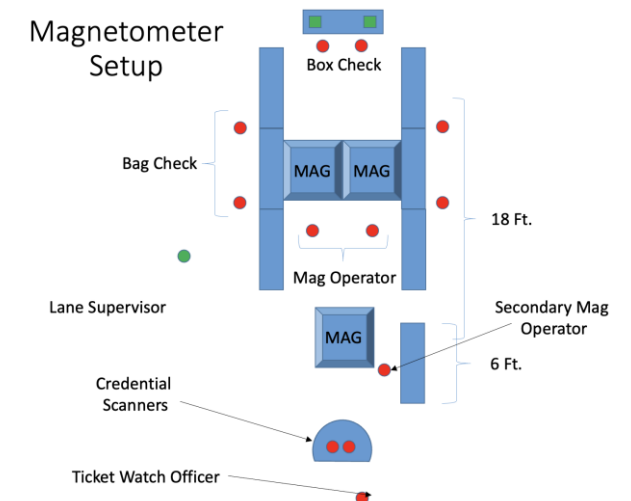
1. Evacuation Watch - Conditions are very favorable for severe weather to form. Only get involved in tasks that allow you to get away quickly.
2. Evacuation Warning - Conditions are degenerating; high probability that play will be stopped.
3. Evacuation in Effect - Play suspended. Seek shelter immediately.

**We ask our vendors to lead by example and do your part to keep yourself and others working in the safest environment possible**

# ACCESS CONTROL, TICKETS & PARKING



- Tickets are available for purchase online currently at [www.livgolf.com](http://www.livgolf.com)
- Parking will be complimentary to all attendees
- All attendees of the Tournament will enter through ticket & credential scanning at designated entry locations at the property perimeter
- Farm Lot Access to the course will be at the marked crosswalk on Ballville Road to enter onto the Tournament Hole #1
- International Lot Access will be by credential only and will be managed by private security inside the golf course at the main entrance
- Twin Springs Lot Access will be a combination of credentialed and public access as well as shuttling to the clubhouse and walk-in access through a gate in the lot to the golf course.



# PROHIBITED ITEMS



Opaque purses larger than 6" x 6"  
Any clear backpacks or bags, larger than 12" x 6" x 12" (in its natural state)  
Briefcases, or other hard-sided bags or containers  
Food, beverages, coolers, glass, cans, aluminum bottles or thermoses  
Anything (including but not limited to, flags, banners, clothing etc.) that would facilitate ambush marketing or other commercial activity  
Golf clubs of any size brooms, poles, periscopes, staffs or sticks  
Chairs or seats with pointed ends, rigid type chairs, seat cushions  
Golf shoes with metal spikes  
Strollers, buggies  
Laser pens, selfie sticks, mono/tripods or other professional camera equipment  
Video cameras or other equipment designed for the sole purpose of video and/or audio recording  
TV's, laptops or tablets to include wireless devices that emit radio waves (such as cell phone signal jammers, radio scanners and walkie talkies, wi-fi routers (wireless local networking devices)), with the exception of personal mobile phones and wireless receivers (such as radios).  
Firearms, knives or weapons of any kind (regardless of license or permit)  
Illegal drugs or substances  
Animals (except service animals to aid Guests with disabilities)  
Air horns and other distracting noisemakers or any devices that may interfere with and/or distract any sports or event participant, or impede audio or audio/visual telecast or recording of the game, match or event, or any technology-related service provided at the Tournament  
Step ladders of any kind  
Helmets (e.g., bicycle helmets, motorcycle helmets or baseball helmets)  
Masks or costumes  
Projectiles (e.g., Frisbees or beach balls), drones  
Aerosol cans (e.g., mace, pepper spray, hairspray or sunscreen)  
Fireworks, confetti or glitter  
Visible obscene, indecent or inappropriate clothing  
Propaganda material of a racist or xenophobic nature or constituting an incitement to violence. This also applies to the wearing of clothing or insignia of a racist or xenophobic nature or constituting an incitement to violence. Any political or religious elements whatsoever, such as banners, boards, symbols or fliers  
Objects that might compromise or disrupt the experience and enjoyment of the other spectators, such as large flags, oversized hats, large umbrellas, whistles, vuvuzelas, musical instruments, horns, etc.



## Prohibited Items

- ⓧ Opaque purses larger than 6" x 6"
- ⓧ Any clear backpacks or bags, larger than 12" x 6" x 12" (in its natural state)
- ⓧ Briefcases, or other hard-sided bags or containers
- ⓧ Food, beverages, coolers, glass, cans, aluminum bottles or thermoses
- ⓧ Anything (including but not limited to, flags, banners, clothing etc.) that would facilitate ambush marketing or other commercial activity
- ⓧ Golf clubs of any size brooms, poles, periscopes, staffs or sticks
- ⓧ Chairs or seats with pointed ends, rigid type chairs, seat cushions
- ⓧ Golf shoes with metal spikes
- ⓧ Strollers, buggies
- ⓧ Laser pens, selfie sticks, mono/tripods or other professional camera equipment
- ⓧ Video cameras or other equipment designed for the sole purpose of video and/or audio recording
- ⓧ TV's, laptops or tablets to include wireless devices that emit radio waves (such as cell phone signal jammers, radio scanners and walkie talkies, wi-fi routers (wireless local networking devices)), with the exception of personal mobile phones and wireless receivers (such as radios).
- ⓧ Firearms, knives or weapons of any kind (regardless of license or permit)
- ⓧ Illegal drugs or substances
- ⓧ Animals (except service animals to aid Guests with disabilities)
- ⓧ Air horns and other distracting noisemakers or any devices that may interfere with and/or distract any sports or event participant, or impede audio or audio/visual telecast or recording of the game, match or event, or any technology-related service provided at the Tournament
- ⓧ Step ladders of any kind
- ⓧ Helmets (e.g., bicycle helmets, motorcycle helmets or baseball helmets)
- ⓧ Masks or costumes
- ⓧ Projectiles (e.g., Frisbees or beach balls), drones
- ⓧ Aerosol cans (e.g., mace, pepper spray, hairspray or sunscreen)
- ⓧ Fireworks, confetti or glitter
- ⓧ Visible obscene, indecent or inappropriate clothing
- ⓧ Propaganda material of a racist or xenophobic nature or constituting an incitement to violence. This also applies to the wearing of clothing or insignia of a racist or xenophobic nature or constituting an incitement to violence.
- ⓧ Any political or religious elements whatsoever, such as banners, boards, symbols or fliers
- ⓧ Objects that might compromise or disrupt the experience and enjoyment of the other spectators, such as large flags, oversized hats, large umbrellas, whistles, vuvuzelas, musical instruments, horns, etc.

Such items will be prohibited from being brought into the Tournament. There is no storage area for these items. Guests arriving by public transportation should take particular care not to bring any prohibited items, as no exceptions will be made. LIV Golf management reserves the right to change or modify this policy without notice.

# CREDENTIALS & PARKING PASSES



- Parking Credentials & Badges will provide specific access to designated areas and parking zones along with proper routing based upon guidance from local authorities.
- All credentials will have RFID chips that will designate which areas people have access to. Badges will be scanned at all access points.

# DELIVERIES



- All deliveries will require a tournament delivery pass to access the property
- During tournament week, deliveries will need to be made prior to play (5AM – 8:00AM) or at the conclusion of the day's activities (10PM – 12AM)
- Any Shipping & Receiving during Tournament Hours (Including Credentialed Delivery Passes) will be directed to an off-site location and coordinated in advance with local & national delivery groups
- Screening, threat detection and distribution will occur for all deliveries throughout the Tournament with coordination from tournament and local, regional and national support.



Thank You



PAR5 GROUP