

NOTES:

- SEE GENERAL NOTES (SHEET C1.0) FOR ADDITIONAL INFORMATION APPLICABLE TO ALL PLAN SHEETS.
- DIMENSIONS OF PARKING SPACES AND DRIVEWAYS ARE MEASURED FROM FACE OF CURB.
- HANDICAP ACCESSIBLE PARKING SPACES SHALL BE IDENTIFIED BY A SIGN LOCATED AT THE HEAD OF EACH SPACE. THE SIGN(S) SHALL SHOW THE INTERNATIONAL SYMBOL OF ACCESSIBILITY (MUTCD CODE R7-8)

PARKING TABLE

PARKING SPACES SHALL BE 9' WIDE x 18' DEEP. THERE IS NO STRIPING WITHIN THE EXISTING PAVED PARKING AREA. THE DASHED LINES REPRESENT THE AMOUNT OF SPACES THAT THE AREA COULD PRODUCE.

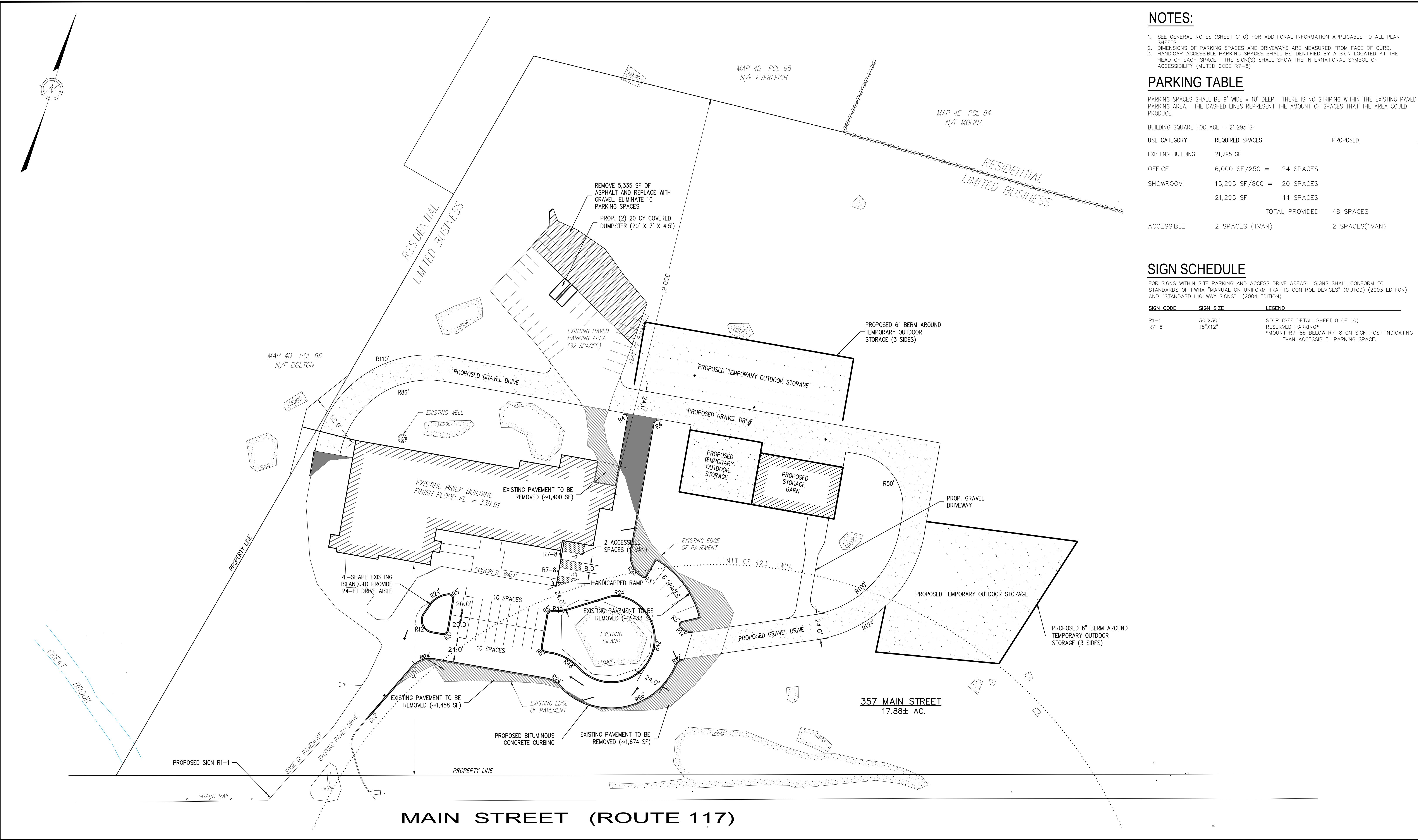
BUILDING SQUARE FOOTAGE = 21,295 SF

USE CATEGORY	REQUIRED SPACES	PROPOSED
EXISTING BUILDING	21,295 SF	
OFFICE	6,000 SF/250 = 24 SPACES	
SHOWROOM	15,295 SF/800 = 20 SPACES	
	21,295 SF	44 SPACES
		TOTAL PROVIDED 48 SPACES
ACCESSIBLE	2 SPACES (1VAN)	2 SPACES(1VAN)

SIGN SCHEDULE

FOR SIGNS WITHIN SITE PARKING AND ACCESS DRIVE AREAS. SIGNS SHALL CONFORM TO STANDARDS OF FWHA "MANUAL ON UNIFORM TRAFFIC CONTROL DEVICES" (MUTCD) (2003 EDITION) AND "STANDARD HIGHWAY SIGNS" (2004 EDITION)

SIGN CODE	SIGN SIZE	LEGEND
R1-1	30"x30"	STOP (SEE DETAIL SHEET 8 OF 10)
R7-8	18"x12"	RESERVED PARKING* *MOUNT R7-8s BELOW R7-8 ON SIGN POST INDICATING "VAN ACCESSIBLE" PARKING SPACE.



PREPARED BY:

DILLIS & ROY
CIVIL DESIGN GROUP

CIVIL ENGINEERS LAND SURVEYORS WETLAND CONSULTANTS
1 MAIN STREET, SUITE 1 LUNENBURG, MA 01462
PHONE: (978) 779-6091
www.dillisoroy.com

OWNER:
ANDREW & JILL EVERLEIGH
184R RIVERNECK ROAD
CHELMSFORD, MASSACHUSETTS

APPLICANT:
ENVIRONMENTAL POOLS
184R RIVERNECK ROAD
CHELMSFORD, MASSACHUSETTS

SCALE:

1 in. = 40 ft.

COPYRIGHT DILLIS & ROY CIVIL DESIGN GROUP, INC 2021

FRANCIS M. McPARTLAN
No. 49572
REGISTERED PROFESSIONAL ENGINEER
STATE OF MASSACHUSETTS

7/17/2023

SITE LAYOUT PLAN
357 MAIN STREET
BOLTON, MASSACHUSETTS

NO.	DATE	DESCRIPTION	BY
1	5/24/2021	REVISED PER TOWN & PEER REVIEW COMMENTS	FMM
2	6/21/2021	REVISED PER PEER REVIEW COMMENTS	FMM
3	7/17/2023	STORAGE BARN LOCATION AND REVISED PARKING	MMK

DATE: 6/17/2021
JOB NO. 3571-E

DESIGN BY: JPL
DRAWING NO. 3571-E-SITE

DRAWN BY: JPL
SHEET NO. **C2.1**

CHECKED BY: FMM